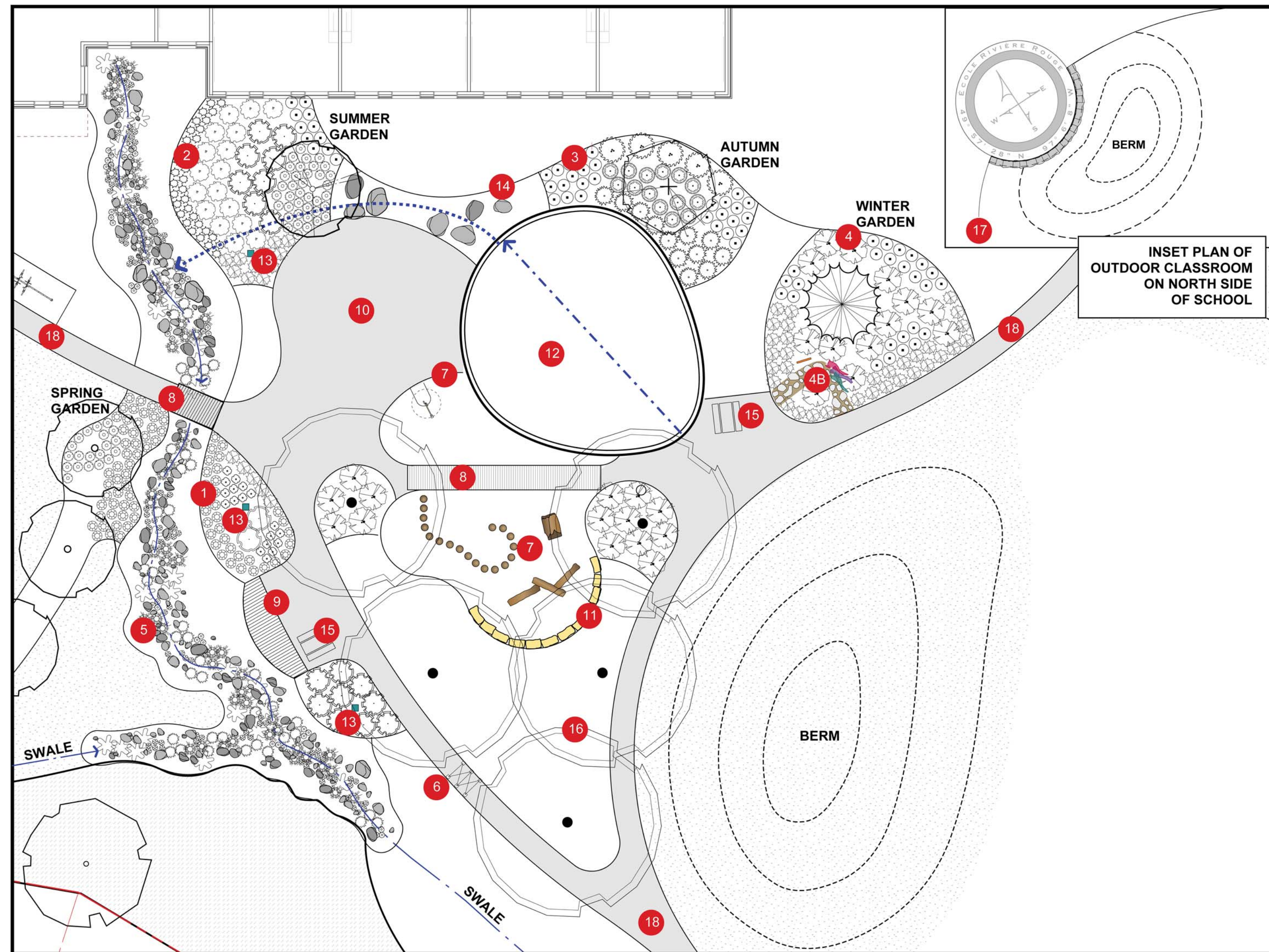




ÉCOLE RIVIÈRE ROUGE OUTDOOR LEARNING ENVIRONMENT



- 1 SEASONAL GARDEN: SPRING
Spring blooms, colours and scents showcase seasonal interest
- 2 SEASONAL GARDEN: SUMMER
Summer blooms, scent and fruit showcase seasonal interest
- 3 SEASONAL GARDEN: AUTUMN
Autumn texture, colour and noise showcase seasonal interest
- 4 SEASONAL GARDEN: WINTER
Winter texture and colour, showcase seasonal interest
- 4B - Windsocks - weather station
- Interpretive Signage
- Slate Stone Path - Geologic classification - Metamorphic rock
- 5 RAIN GARDEN
Demonstrates hydrology, ecology, natural and building systems (sump discharge from building)
- 6 LIVING WILLOW TUNNEL
Art, science and technology are demonstrated through this shade tunnel
- 7 SAND PLAY WITH NATURE PLAY ELEMENTS
- 8 BOARDWALKS
Audial and tactile experience while bridging different ground treatments
- 9 THE PIER
Connection to water, plants + organisms
- 10 HARD SURFACE PLAY AREA
- 11 LIMESTONE BLOCK SEATING
Geological classification - Sedimentary rock
- 12 PLAY AREA WITH FIBAR SAFETY SURFACING
(not included as part of the OLE)
- 13 BIRDBHOUSES
Avian dwelling + identification
- 14 GRANITE CLIMBING BOULDERS
Geological classification - Igneous rock
- 15 REST/LEARNING STATIONS
- 16 SHADE GROVE
- 17 OUTDOOR CLASSROOM WITH CARDINAL DIRECTION GRAPHIC
Geospatial

- Coloured concrete with sandblasted graphics, including longitude and latitude of location
- Limestone block seating
- 18 ASPHALT PATHWAYS

NO.	DATE	ISSUE NOTES

PROFESSIONAL SEAL

THIS DRAWING MUST NOT BE SCALED.

THE CONTRACTOR SHALL VERIFY ALL DIMENSIONS AND OTHER DATA ON SITE PRIOR TO COMMENCEMENT OF WORK. ALL DISCREPANCIES, ERRORS, AND OMISSIONS ARE TO BE REPORTED TO THE ARCHITECT.

DRAWING AND SPECIFICATIONS, AS INSTRUMENTS OF SERVICE, ARE THE PROPERTY OF THE ARCHITECT. THE COPYRIGHT IN THE SAME BEING RESERVED TO HIM.

NO REPRODUCTION MAY BE MADE WITHOUT THE PERMISSION OF THE ARCHITECT, AND WHEN MADE, MUST BEAR HIS NAME. ALL PRINTS TO BE RETURNED TO THE ARCHITECT ON REQUEST.

LANDSCAPE CONSULTANT

500 - 115 Bannatyne Ave. East Winnipeg, MB R3B 0R3
(204) 944-9907 office@htfc.mb.ca

PROJECT TITLE

**ÉCOLE RIVIÈRE ROUGE
K to 5 SCHOOL**

LOCATION

50 SWINFORD WAY,
WINNIPEG, MB

CLIENT

SEVEN OAKS SCHOOL DIVISION

DRAWING TITLE

**OUTDOOR LEARNING
ENVIRONMENT**

DRAWN BD/KB	APPROVED MG	DRAWING NO.
SCALE 1:200	DATE ISSUED 12/16/2014	
PROJECT NUMBER 14-002	REVISION NO. R-0	

